

400/600A MEDIUM SPLIT CORE CURRENT TRANSFORMERS

Split-core current transformers provide linear output voltage that is directly proportional to the input current. These transformers are safely and easily installed over existing electrical power lines without disconnecting the lines or interrupting service.

DENT's energy monitoring components are used for a variety of applications including building automation, tenant submetering, performance verification, energy management, and new technology assessment.

KEY SPECIFICATIONS

Window Size	1.25" (3.20 cm)
Current Range	400A Model: 8—480A AC 600A Model: 12—720A AC
Output	333.3 mV at rated current
Ratio Error*	<1% at rated current (typical)
Phase Error*	<1° at rated current (typical)

ELECTRICAL

Output	333.3 mV at rated current
Wire Polarity	White = Hi, positive (+) Black = Low, negative (-)
Frequency Range	50/60 Hz

MECHANICAL

Case Material	White Nylon, UL 94v0
Leads	3 M (9.8'), twisted pair, 24 AWG
Operating Temperature	-40° to 55°C (-40° to 131°F)

SAFETY

Working Voltage	600 VAC, Category III
Certification	<div> <div> <div>CE</div> <div> <div>c</div> <div>UL</div> <div>us</div> </div> <div>E498920</div> </div> <div> UL 2808 EN 61869-1 EN 61869-2 EN 61000-6-1 CAN/CSA STD C22.2 No. 61010-1-12 </div> </div>

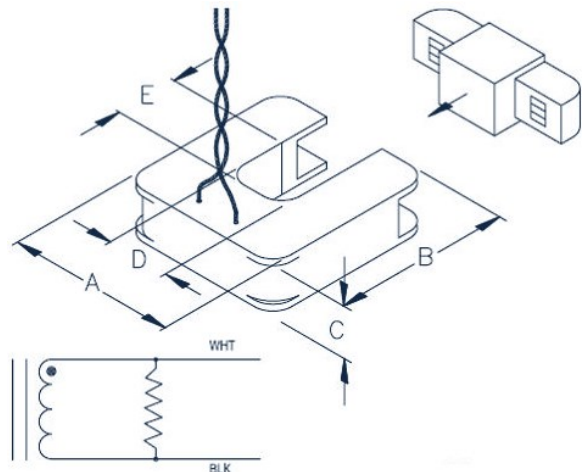
CONTACT US

DENT Instruments, Inc.
Energy & Power Measurement Solutions
An ISO 9001:2008 Certified Company

925 SW EMKAY DRIVE
BEND, OREGON 97702 USA
541.388.4774 | 800.388.0770
WWW.DENTINSTRUMENTS.COM



DENT P/N	NOMINAL RATING (Amps)	USEFUL CURRENT RANGE (Amps)	DIMENSIONS				
			A	B	C	D	E
CT-SCM-0400 CT-SCM-0600	400 600	8—480A AC 12—720A AC	8.26 cm (3.25")	8.51 cm (3.35")	2.54 cm (1.00")	3.18 cm (1.25")	3.18 cm (1.25")



PART NUMBERS

CT-SCM-0400-U/B	400A Medium Split Core
CT-SCM-0600-U/B	600A Medium Split Core

All specifications contained in this document are subject to change without notice.
© DENT INSTRUMENTS, INC.
rev081123