

# 400/600A SPLIT CORE RECTANGULAR SLIDE-OUT CURRENT TRANSFORMERS



DENT's Split Core Rectangular Slide-Out Current Transformers are designed for easy installation over existing high-current loads without requiring a line or load disconnect. These CTs are ideal for a variety of applications including building automation, tenant submetering, performance verification, energy management, and new technology assessment.

DENT's energy monitoring components are used for a variety of applications including building automation, tenant submetering, performance verification, energy management, and new technology assessment.



## KEY SPECIFICATIONS

Current Rating	400A	600A
Current Range	8-480A	12-720A
Window Size	1.25" (32mm)	
Output	333.3 mV at rated current	
Ratio Error	<1% at rated current (typical)	
Phase Error	<1° at rated current (typical)	

## ELECTRICAL

Wire Polarity	White = Hi, positive (+) Black = Low, negative (-)
Frequency Range	50/60 Hz

## MECHANICAL

Case Material	White Nylon, UL 94v0
Leads	3 M (9.8'), twisted pair, 22 AWG
Operating Temperature	-40° to 55°C (-40° to 131°F)

## SAFETY

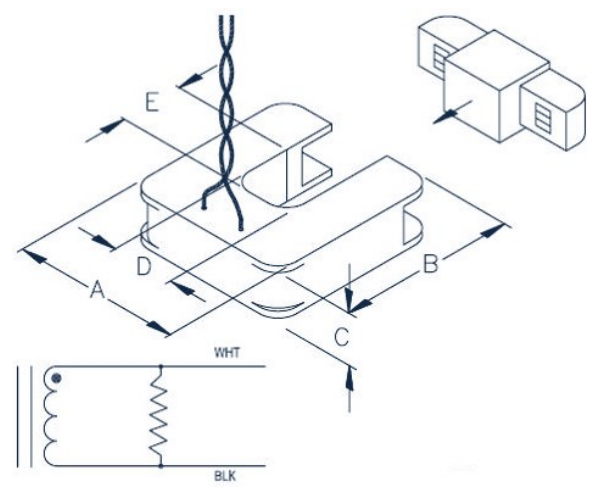
Working Voltage	600 VAC, Category III
Certification	UL 2808 CAN/UL 2808 CAN/CSA STD C22.2 No. 61010-1

## CONTACT US

DENT Instruments, Inc.  
 Energy & Power Measurement Solutions  
 An ISO 9001:2008 Certified Company

925 SW EMKAY DRIVE  
 BEND, OREGON 97702 USA  
 541.388.4774 | 800.388.0770  
 WWW.DENTINSTRUMENTS.COM

## OUTLINE DRAWING



DENT P/N	DIMENSIONS				
	A	B	C	D	E
CT-SCM-0400	8.26 cm	8.51 cm	2.54 cm	3.18 cm	3.18 cm
CT-SCM-0600	(3.25")	(3.35")	(1.00")	(1.25")	(1.25")

## PART NUMBERS

400A Split Core Rectangular Slide-Out CT	CT-SCM-0400-U
600A Split Core Rectangular Slide-Out CT	CT-SCM-0600-U

All specifications contained in this document are subject to change without notice.  
 © DENT INSTRUMENTS, INC.  
 rev06132024