

# ELITEPRO XC/SP EQUIPPED WITH THE **BLUETOOTH®** WIRELESS TECHNOLOGY OPTION

rev061213

## Overview


*Note: This document covers the Bluetooth option for both the ELITEpro XC and ELITEpro SP. The directions for both meters are identical unless otherwise noted.*

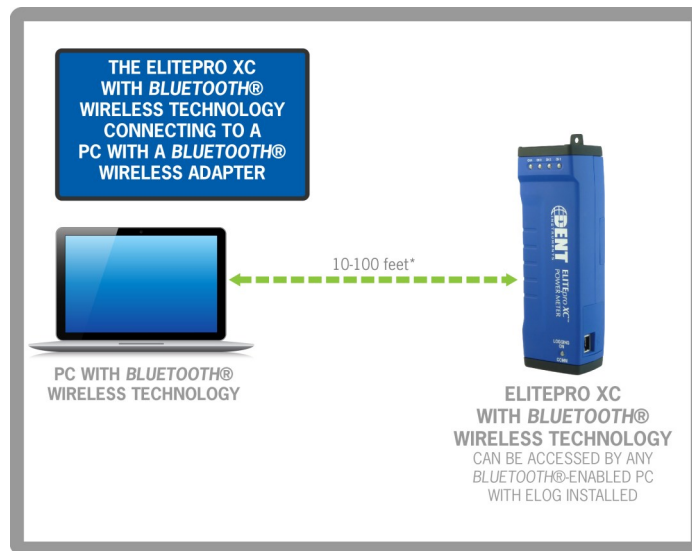
Bluetooth is intended for wireless connections up to 100ft, depending on the installation environment. The ELITEpro XC uses the higher power Class 1 Bluetooth transceiver for longest range. Range may be limited if the ELITEpro SP is mounted within a metal cabinet. **Note: A laptop cannot be in a docking station when using Bluetooth.**

Connections must be configured initially via USB by users with knowledge of Windows Bluetooth wireless technology enabled products.

To make a Bluetooth connection from a PC to an ELITEpro XC both devices must have a Bluetooth module. Most PCs, including laptops, do not have Bluetooth and it may be necessary to purchase a Bluetooth dongle (usually a plug-in USB device) and add it to the PC. If purchasing an external Bluetooth dongle ensure that it supports SPP, Serial Port Protocol. Typically the packaging will indicate if it supports SPP. Follow the Bluetooth manufacturer’s instructions for installing the Bluetooth device.

The rest of this discussion assumes that the PC has Bluetooth capability. Additional information may be found by opening Windows Help and searching for “Bluetooth.” Look for “Add a Bluetooth enabled device.”

Bluetooth devices must be “paired” to communicate. Look in the Task Bar on your PC for the Bluetooth icon.  (Hint: the symbol may be hidden until the “Show hidden icons” button is clicked). After clicking the Bluetooth icon a window should open as shown below:



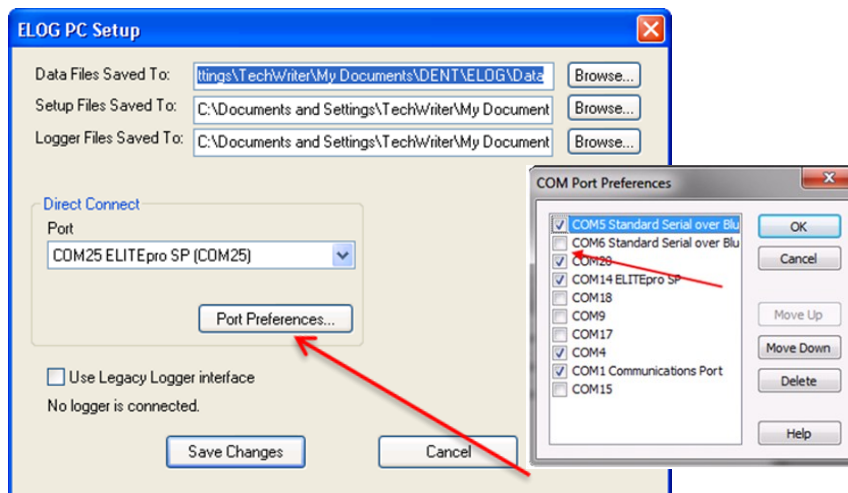
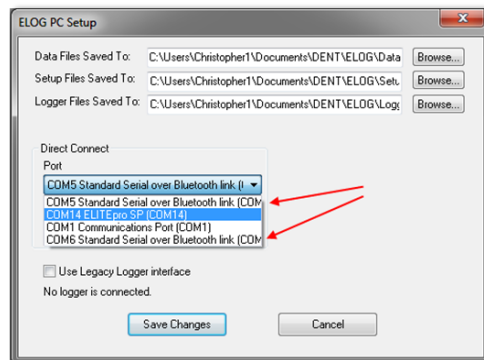
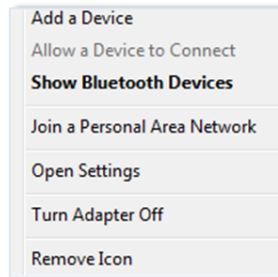
Continued...

\*Example Bluetooth® wireless technology internal antenna ranges:

1. Open Air, as specified in manual: <100 ft.
2. One brick/concrete wall: <10 ft.
3. Two sheetrock walls: <20 ft.

## To pair your **Bluetooth ELITEpro XC** to your PC:

1. Click **Add a Device**. You should then see a list of *Bluetooth* devices external to the PC including the ELITEpro XC, identified by its serial number. (The logger may be the only device the PC sees.)
2. Select the desired ELITEpro SP and click **Next**.
3. In Windows 7, you will next be asked to create a pairing code, enter the device's pairing code, or pair without using a code. Click **Enter the Device's pairing code**.
4. When prompted, enter the ELITEpro XC pairing code. The factory default value is 1234. Windows should then display a message that your device is ready to use.
5. Next, determine which com port Windows assigned to the *Bluetooth* link. In ELOG, click on the **PC Setup** speed button. Windows may have assigned two com ports to the *Bluetooth* link, but only one will work for communication. The correct port to use is found through trial and error.
6. Click on the first "...Standard Serial over Bluetooth link..." found in the Direct Connect Port dropdown list, click **Save Changes**, and attempt to communicate using Direct Serial or *Bluetooth* Connection speed button or use **Logger > Communication > Connect via USB or Bluetooth**. The connection may take up to 10 seconds to complete. If the first port attempt fails, try again using the other *Bluetooth* port found in PC Setup. Repeat, if necessary, until a connection is established and the correct *Bluetooth* port is known.
7. Reopen ELOG PC Setup and click the **Port Preferences** button. The COM Port Preferences dialog box displays where you can deselect the check boxes for the ports that are not used by ELOG, including the extra com port(s) for the *Bluetooth* connections by clicking on an unneeded checkbox to remove the check. In the example below, the *Bluetooth* Com 6 has been removed and Com 5 is kept.
8. Click **OK**, and then **Save Changes** in the ELOG PC Setup dialog box. The unused Com Ports no longer appear in the Port drop-down list.



Continued...



## Troubleshooting

If you are unable to connect to the logger, check the following items:

1. In the Windows Control Panel, open Devices and Printers and verify that the ELITEpro SP is shown in the *Bluetooth* devices along with the *Bluetooth* module in the PC. If not, reinstall the PC's *Bluetooth* devices and/or re-pair the PC to the logger.
2. If it does not appear after repeating the steps, ensure that the device is powered and the blue COMM light is flashing.
3. If it is visible and you are unable to make a connection, or if you are unable to get the device added via the Windows Control Panel, contact DENT Instruments for questions and assistance.

## ELITEPRO XC/SP COMMUNICATIONS MATRIX

Feature	USB	Ethernet	Bluetooth®	Wi-Fi	Wi-Fi Access Point Mode
<b>ELITEpro SP 8MB Download Time (approx.)</b>	4 min	6 min	22 min	20 min	Using ELOG: 30 minutes Using Web Browser: N/A
<b>ELITEpro XC 16MB Download Time (approx.)</b>	8 min	12 min	44 min	40 min	40 min
<b>Range</b>	Length of USB cable	Length of network cable	10-100 ft*	75-300 ft**	75-300 ft**
<b>Access with...</b>	PC + ELOG	PC + ELOG	Bluetooth®- enabled PC + ELOG	Wi-Fi-enabled PC + ELOG	Wi-Fi-enabled PC + ELOG or Wi-Fi-enabled laptop, tablet, or smartphone with web browser.
<b>Internet?</b>	No	Depends on network firewall	No	Depends on network firewall	No
<b>Functionality</b>	Full	Full	Full	Full	Partial via web browser.