

400A MEDIUM SPLIT CORE CURRENT TRANSFORMER



Split-core current transformers provide linear output voltage that is directly proportional to the input current. These transformers are safely and easily installed over existing electrical power lines without disconnecting the lines or interrupting service.

DENT's energy monitoring components are used for a variety of applications including building automation, tenant submetering, performance verification, energy management, and new technology assessment.

KEY SPECIFICATIONS

Window Size	1.25" (3.20 cm)
Current Range	8 - 520A AC
Output	333 mV at rated current
Ratio Error*	<1% at rated current (typical)
Phase Error*	<2° at rated current (typical)

ELECTRICAL

Output	333 mV at rated current
Wire Polarity	White = Hi, positive (+) Black = Low, negative (-)
Frequency Range	50 to 400 Hz

MECHANICAL

Case Material	Epoxy encapsulated housing
Leads	Twisted pair, 20 AWG
Operating Temperature	-20° to 55°C (-4° to 131°F)

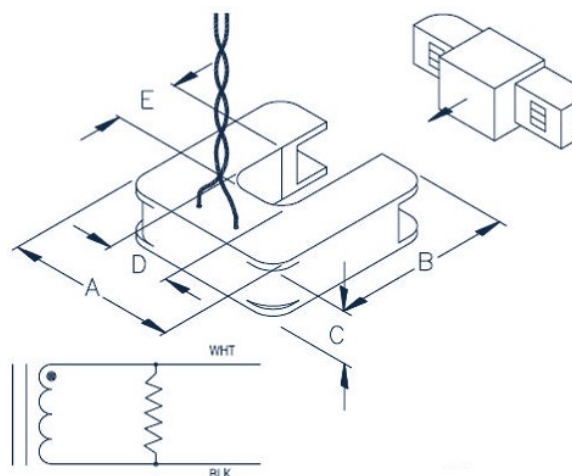
SAFETY

Working Voltage	600 VAC, Category III
Dielectric Strength	5000 VAC around case 600V rated leads
Certification	Conforms to: UL STD 61010-1 EN 60044-1 Certified to: CAN/CSA STD C22.2 No. 61010-1



PART NUMBERS

	3 M Leads	7 M Leads
400A Medium Split Core CT	CT-SCM-0400-U	CT-SCM-0400-U-7M



NOMINAL RATING (Amps)	USEFUL CURRENT RANGE (Amps)	DIMENSIONS				
		A	B	C	D	E
400	8 - 520A AC	8.26 cm (3.25")	8.51 cm (3.35")	2.54 cm (1.00")	3.18 cm (1.25")	3.18 cm (1.25")

CONTACT US

DENT Instruments, Inc.
Energy & Power Measurement Solutions
An ISO 9001:2008 Certified Company

925 SW EMKAY DRIVE
BEND, OREGON 97702 USA
541.388.4774 | 800.388.0770
WWW.DENTINSTRUMENTS.COM