

# 400A MEDIUM SPLIT CORE CURRENT TRANSFORMER



Split-core current transformers provide linear output voltage that is directly proportional to the input current. These transformers are safely and easily installed over existing electrical power lines without disconnecting the lines or interrupting service.



DENT's energy monitoring components are used for a variety of applications including building automation, tenant submetering, performance verification, energy management, and new technology assessment.

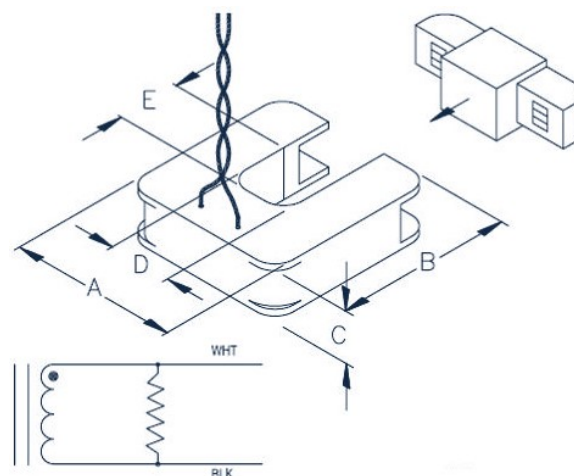


| KEY SPECIFICATIONS |                                |
|--------------------|--------------------------------|
| Window Size        | 1.25" (3.20 cm)                |
| Current Range      | 8 - 520A AC                    |
| Output             | 333 mV at rated current        |
| Ratio Error*       | <1% at rated current (typical) |
| Phase Error*       | <2° at rated current (typical) |

| ELECTRICAL      |   |
|-----------------|---|
| Output          | 333 mV at rated current                               |
| Wire Polarity   | White = Hi, positive (+)<br>Black = Low, negative (-) |
| Frequency Range | 50 to 400 Hz  |

| MECHANICAL            |                             |
|-----------------------|-----------------------------|
| Case Material         | Epoxy encapsulated housing  |
| Leads                 | Twisted pair, 20 AWG        |
| Operating Temperature | -20° to 55°C (-4° to 131°F) |

| SAFETY              |   |
|---------------------|---|
| Working Voltage     | 600 VAC, Category III   |
| Dielectric Strength | 5000 VAC around case<br>600V rated leads  |
| Certification       |   Conforms to:<br>UL STD 61010-1<br>EN 60044-1<br>Certified to:<br>CAN/CSA STD C22.2<br>No. 61010-1 |



| NOMINAL RATING (Amps) | USEFUL CURRENT RANGE (Amps) | DIMENSIONS      |                 |                 |                 |                 |
|-----------------------|-----------------------------|-----------------|-----------------|-----------------|-----------------|-----------------|
|                       |                             | A               | B               | C               | D               | E               |
| 400                   | 8 - 520A AC                 | 8.26 cm (3.25") | 8.51 cm (3.35") | 2.54 cm (1.00") | 3.18 cm (1.25") | 3.18 cm (1.25") |

| PART NUMBERS | 3 M Leads                 | 7 M Leads     |
|--------------|---------------------------|---------------|
|              | 400A Medium Split Core CT | CT-SCM-0400-U |

| CONTACT US  |  |
|---|--|
| <b>DENT Instruments, Inc.</b><br>Energy & Power Measurement Solutions<br>An ISO 9001:2008 Certified Company | 925 SW EMKAY DRIVE<br>BEND, OREGON 97702 USA<br>541.388.4774   800.388.0770<br>WWW.DENTINSTRUMENTS.COM |

All specifications contained in this document are subject to change without notice.  
 © DENT INSTRUMENTS, INC.  
 031119