

ELITEpro SP/XC Logger Firmware UPDATE INSTRUCTIONS

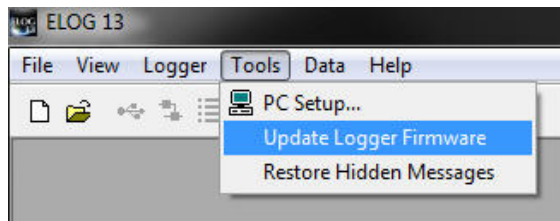


PLEASE NOTE: If you are currently running ELOG 11 or ELOG 12, you may contact DENT Instruments for a FREE upgrade to ELOG 13 software.

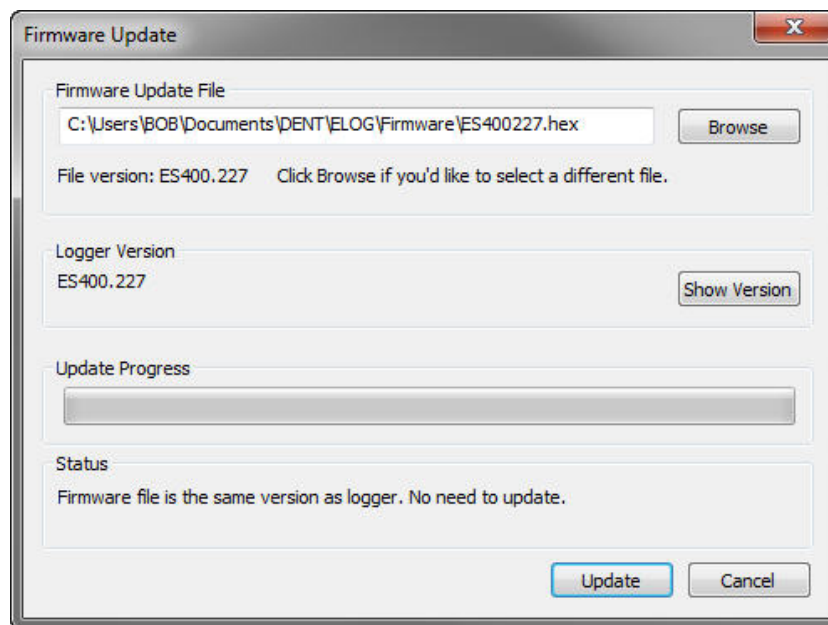
Please phone 800.388.0770 or contact sales@dentinstruments.com for more information.

Prior to installing the new firmware, please check the current version running on your ELITEpro SP/XC. It can be found in the Logger Status box at the lower left hand side of the ELOG screen.

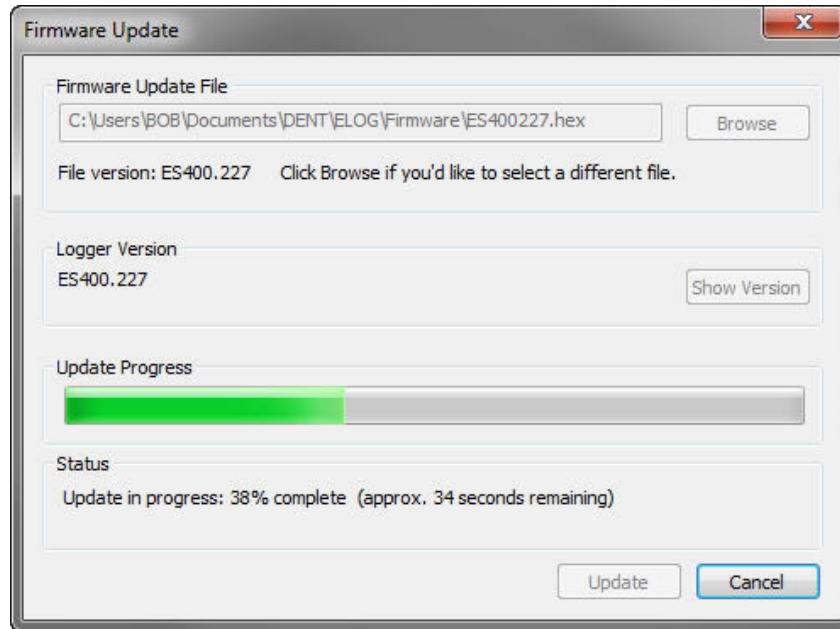
1. From ELOG; choose the Tools > Update Logger Firmware option from the main menu:



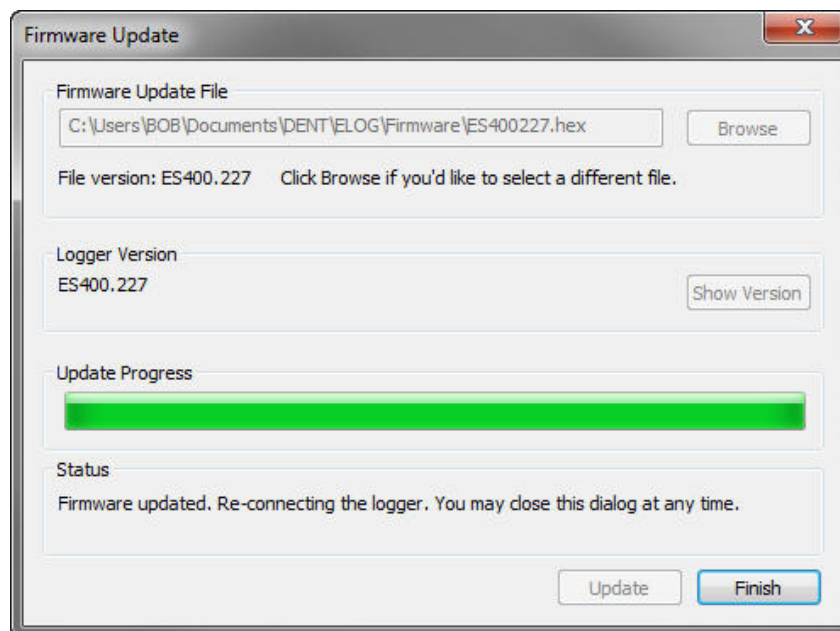
2. Make sure the ELITEpro SP/XC is connected and ready for updates. (IMPORTANT: All logged data will be lost. Please insure you have retrieved all logged data before updating the firmware).
3. From the Firmware Update dialog, browse to the location chosen earlier (Step 3 above) and click Update.




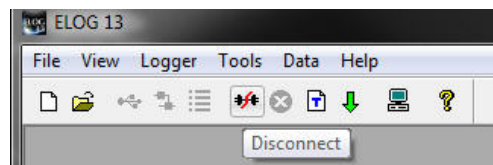
4. The update will typically take less than 5 minutes to install, depending on connection type.



5. Click Finish.



6. Disconnect the ELITEpro SP/XC from ELOG using the disconnect button .



7. Reconnect and configure the ELITEpro SP/XC as needed.