

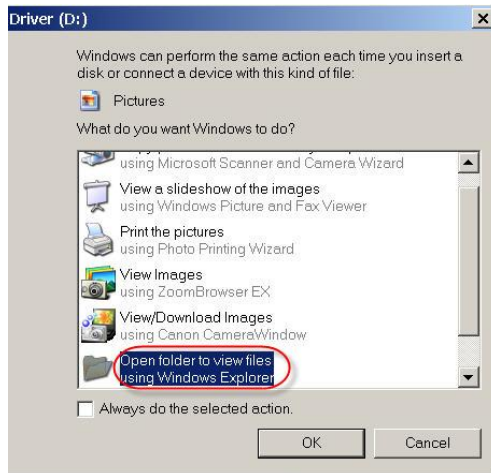
Using the Sabrent USB to Serial Adapter With An **ELITE**pro or **DATA**pro

Part Number SBT-USC6M

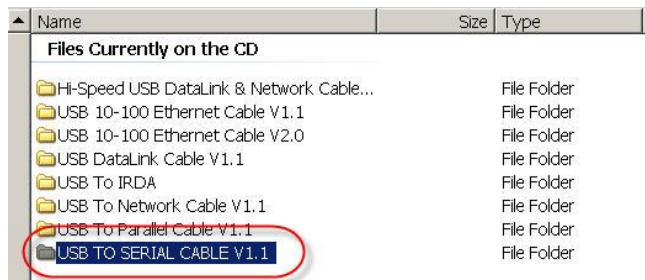
March 31, 2009, Rev 1

Requires ELOG 2002b October 20, 2002 or later (shown in Help; About ELOG)

1. Insert the mini-CD disk into the drive where it will auto-start. Next click on Open folder to view files using Windows Explorer. Click OK.



2. Select USB TO SERIAL CABLE V1.1



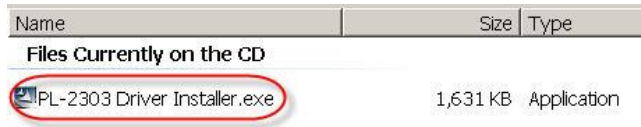
3. Select Windows



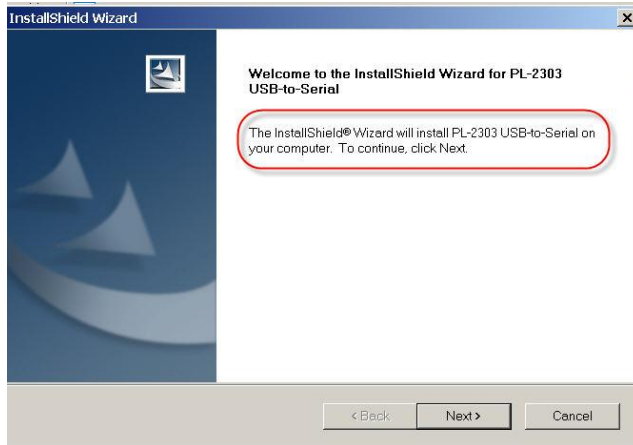
4. Select Install



5. Select the PL-2303 Driver Installer program



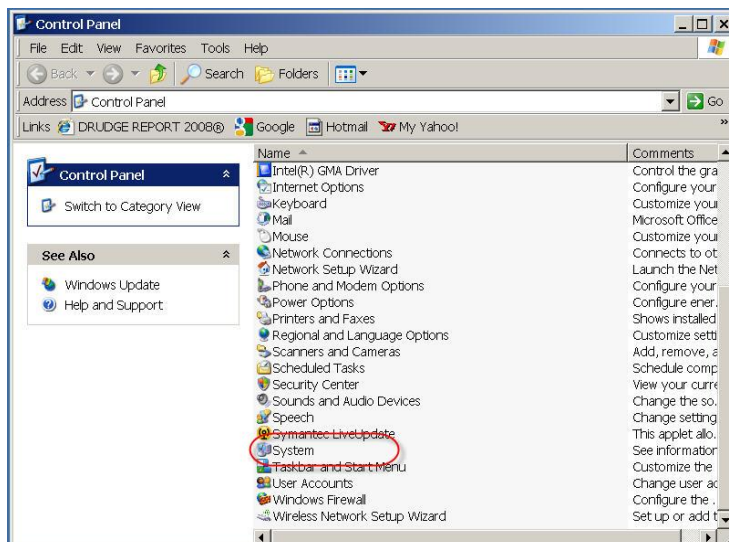
6. The Install Shield will install the drivers. Click on Finish when installation is complete.



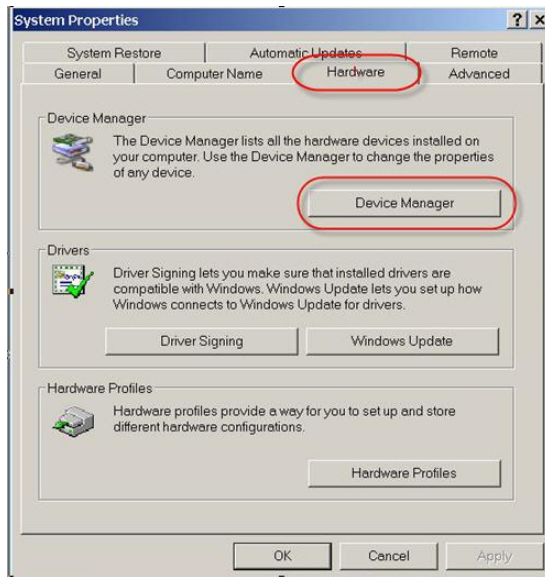
7. Plug the USB converter into an available USB port. The PC will find the new hardware device and install the drivers.



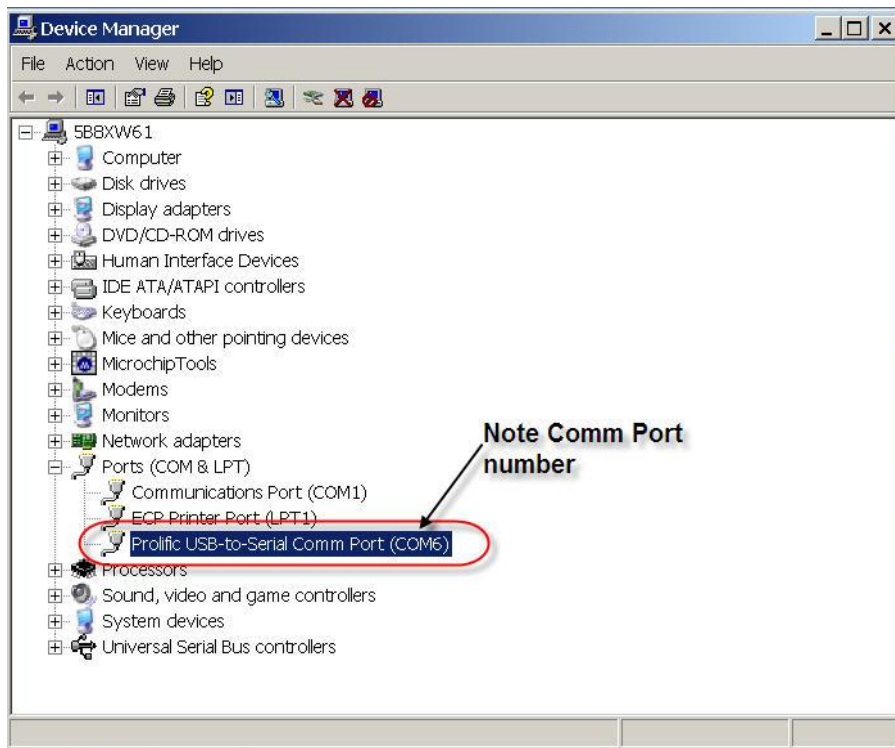
8. Determine which COM port the USB adapter is on. Go to: Start | Settings | Control Panel | System.




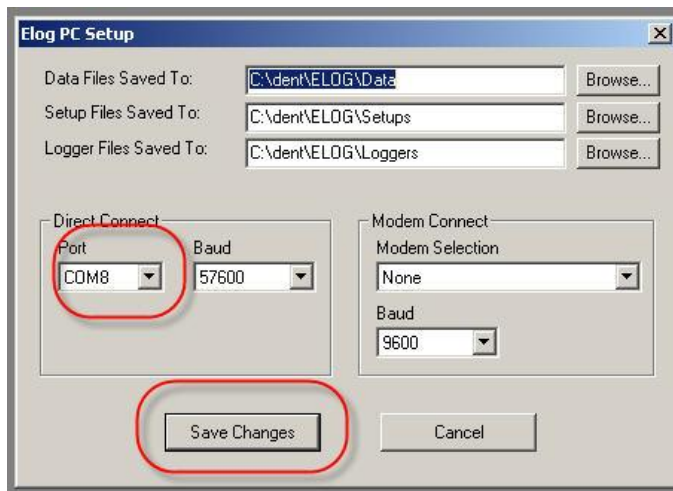
9. Select the Hardware tab and then click Device Manager.



10. Expand the Ports (COM & LPT) by clicking on the + sign. Devices and their respective port numbers will be shown. Make a note of the COM number for the Prolific device (in this case COM6).




11. Launch ELOG. Click on the menu item: Tools | PC Setup (or use the  speed button). Change the COM port to match the port number assigned to the Prolific USB adapter. Then Save Changes.



12. Connect the ELITEpro (or DATApr) to the USB Adapter **using the null modem adapter** supplied or using the original null modem cable that came with your logger—but not both.



13. Click on Logger | Communication | Direct Connect (Null Modem Cable) or use the  button.
Use ELOG with your PC to connect to the Logger as you would on a direct serial connection.

Problems?

If the PC does not recognize the com port or access is denied, the best solution is to insert the cable into a different Com port. The PC will assign it a new com port. Follow the steps to determine the Com port number and assign the number in ELOG.

Also check that your version of ELOG is dated 2002b October 20, 2002 or later. Check that all relevant Windows updates have been installed.

Vista Users

The drivers on the mini disk work with Vista.

Drivers can also be downloaded from Sabrent's Web Page:

<http://www.sabrent.com/#itemID=0§ion=Drivers&itemName=>