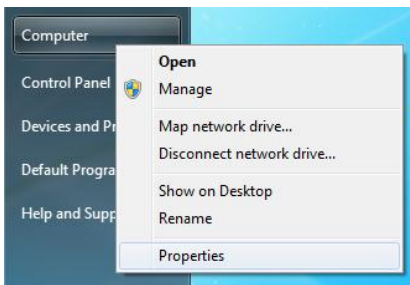


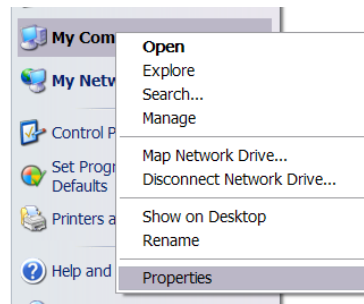
TROUBLESHOOTING ELITEPRO SP DRIVER INSTALLATION

If you have connected the ELITEpro SP to a computer via the USB cable and the driver fails to install, follow these steps to correct the problem.

- 1 Go to the **Device Manager** by right-clicking My Computer in the Start Menu and selecting **Properties**.

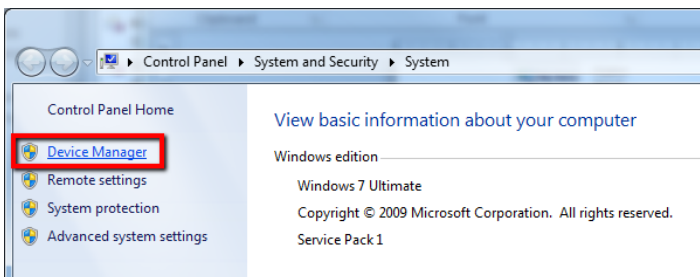


Windows Vista and 7



Windows XP

- 2 In the **Properties** window, select **Device Manager**. In Windows 7, the Device Manager is on the left side of the window. In Windows XP, select the Hardware tab, then click the Device Manager button. See below.

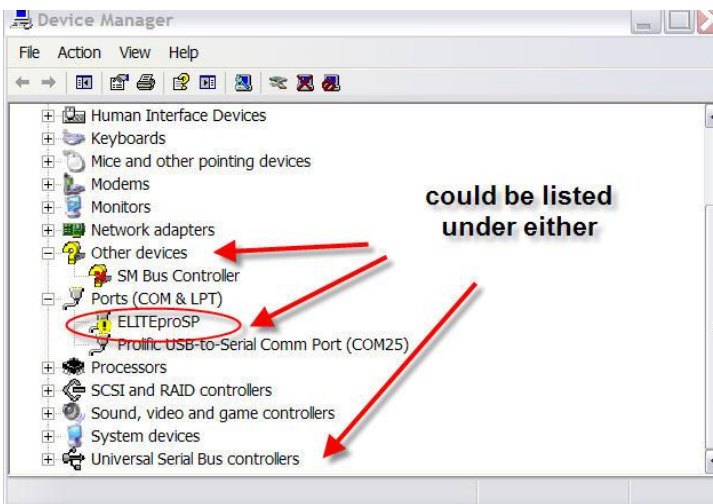


Windows Vista and 7

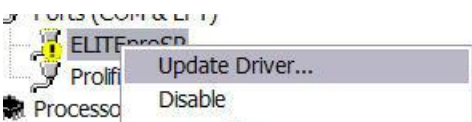


Windows XP

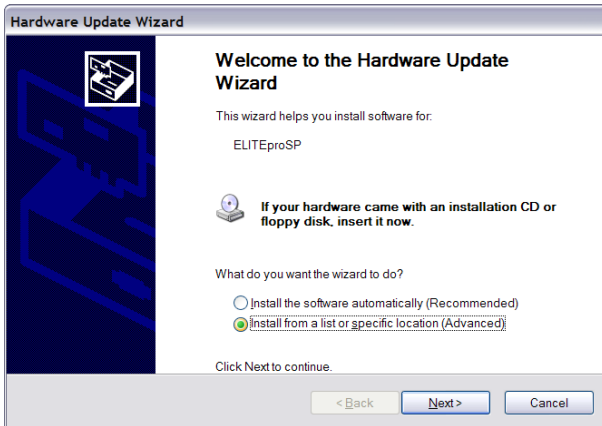
- 3 Look for the ELITEpro SP listed in the Device Manager Window:



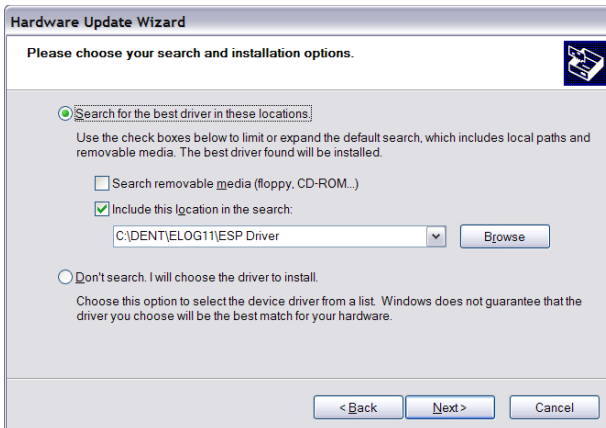
- 4 Right-click the ELITEpro SP and select **Update Driver...**



- 5 In the Hardware Update Wizard, select **Install from a list or specific location (Advanced)** and click **Next>**.



- 6 In the next window, select **Search for the best driver in these locations** and **Include this location in the search**. Choose **Browse** and locate the ELITEpro SP driver folder in the ELOG 11 directory.



- 7 Click **Next>** and the ELITEpro SP driver will install.
- 8 Unplug the ELITEpro SP and plug it back in. ELOG 11 should launch and automatically connect to the ELITEpro SP.