

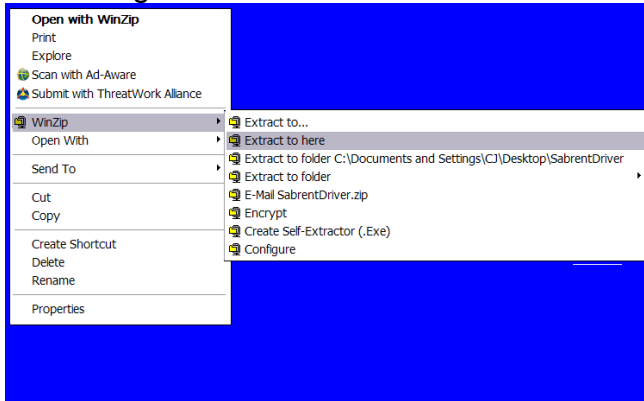
Using the Sabrent USB to Serial Adapter With An **ELITE**pro or **DATA**pro

Part Number SBT-USC6M

May 19, 2011 | Rev 3

Requires ELOG 2002b October 20, 2002 or later (shown in Help; About ELOG)

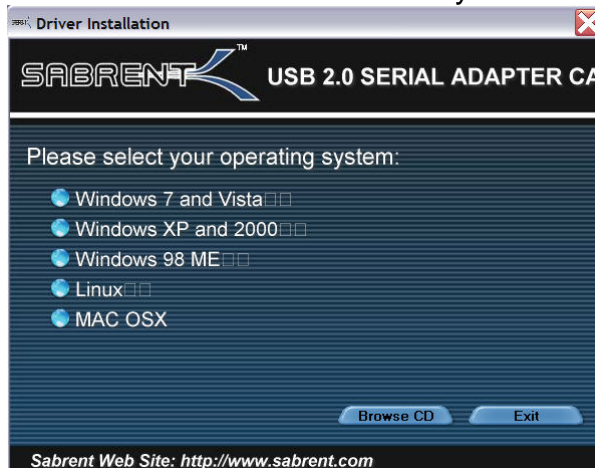
1. Be sure the cable is **NOT** connected before driver installation.
2. Unzip the file using the extract here command, right click the zipped file and do the following :



3. Open the unzipped folder and select the Autorun.exe:

Name	Size	Type	Date Modified
Linux		File Folder	5/19/2011 7:1...
Mac		File Folder	5/19/2011 7:1...
Windows		File Folder	5/19/2011 7:1...
autorun.exe	2,378 KB	Application	5/24/2010 6:2...
autorun.ico	10 KB	Icon	5/24/2010 6:2...
autorun.inf	1 KB	Setup Informati...	7/15/2010 11:...
autorun.tgt	129 KB	TGT File	7/15/2010 11:...

4. Next click on the version of windows you are running.

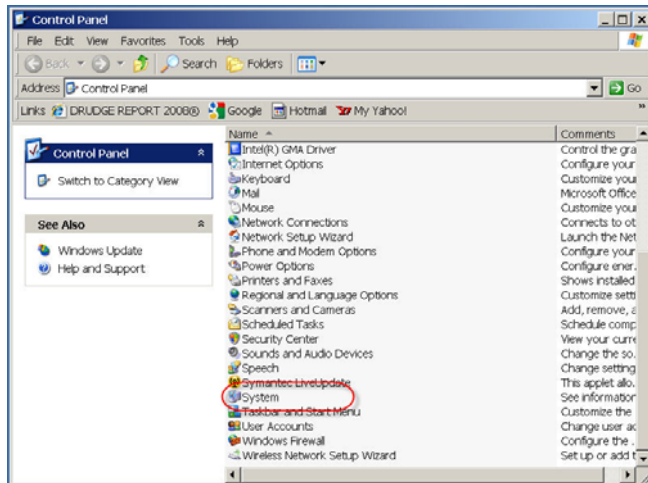


5. Click finish once installed.
6. Plug the USB converter into an available USB port. The PC will find the new

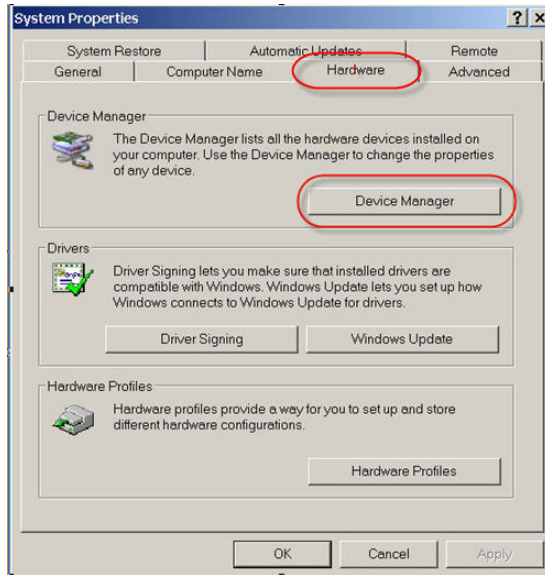
hardware device and install the drivers.



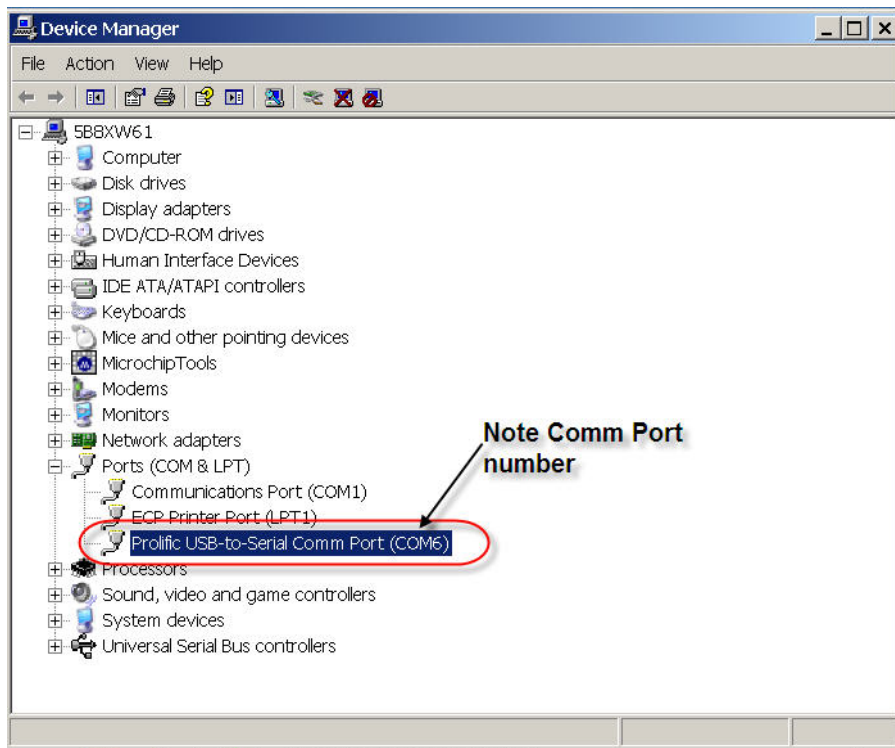
7. Determine which COM port the USB adapter is on. Go to: Start | Settings | Control Panel | System.




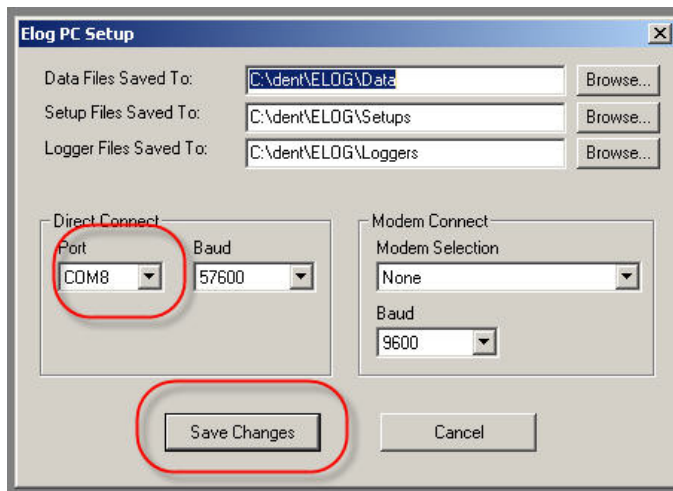
8. Select the Hardware tab and then click Device Manager.



9. Expand the Ports (COM & LPT) by clicking on the + sign. Devices and their respective port numbers will be shown. Make a note of the COM number for the Prolific device (in this case COM6).




10. Launch ELOG. Click on the menu item: Tools | PC Setup (or use the  speed button). Change the COM port to match the port number assigned to the Prolific USB adapter. Then Save Changes.



11. Connect the ELITEpro (or DATApr) to the USB Adapter **using the null modem adapter** supplied or using the original null modem cable that came with your logger—but not both.



13. Click on Logger | Communication | Direct Connect (Null Modem Cable) or use the  button.
Use ELOG with your PC to connect to the Logger as you would on a direct serial connection.

Problems?

If the PC does not recognize the com port or access is denied, the best solution is to insert the cable into a different Com port. The PC will assign it a new com port. Follow the steps to determine the Com port number and assign the number in ELOG.

Also check that your version of ELOG is dated 2002b October 20, 2002 or later. Check that all relevant Windows updates have been installed.