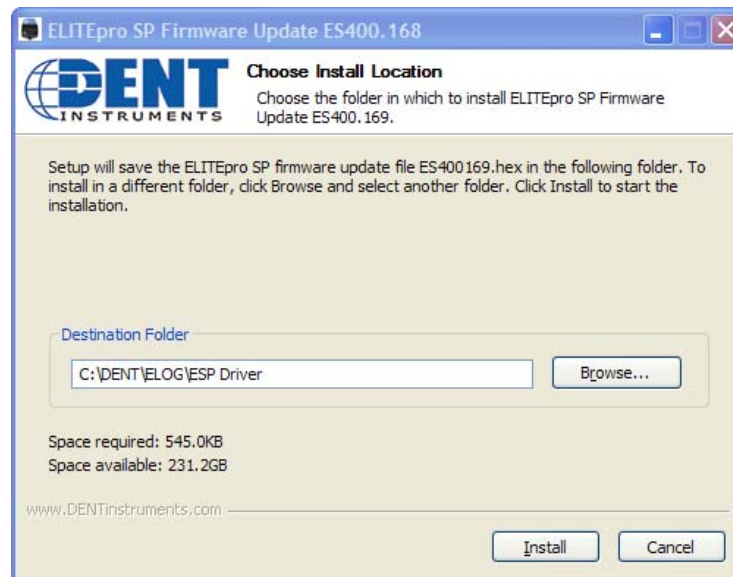


ELITEpro SP Logger Firmware UPDATE INSTRUCTIONS



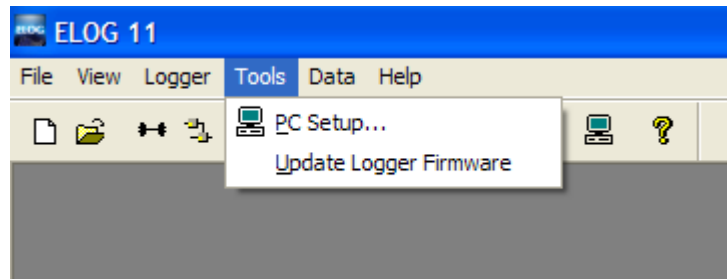
1. Prior to installing firmware, check the current version of firmware running on your ELITEpro SP by connecting the instrument to a PC running ELOG and connecting to the logger. The firmware version is displayed in the logger status box at the bottom of ELOG.
2. Make sure you are connected to the Internet and navigate to the following link (click on link or cut and paste into the address bar in your browser): http://www.dentstruments.com/elitepro_sp_firmware/
3. Click the **ELITEproSPupdate.exe** link to begin the download.
4. Once the download is complete, run the installer program.
5. The following dialog should come up:



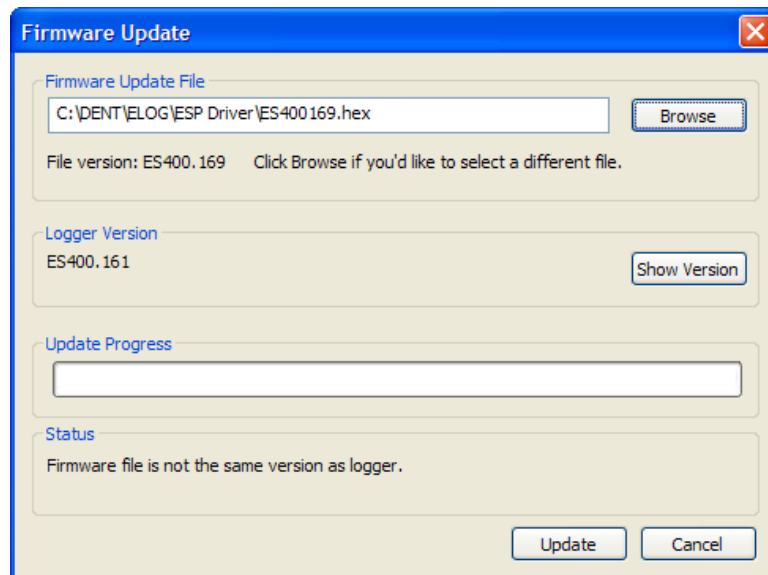
6. Verify the location under Destination Folder is where you would like the new firmware to be saved and click the **Install** button.
7. ELOG can be run automatically by leaving the box checked or you may manually run ELOG later.



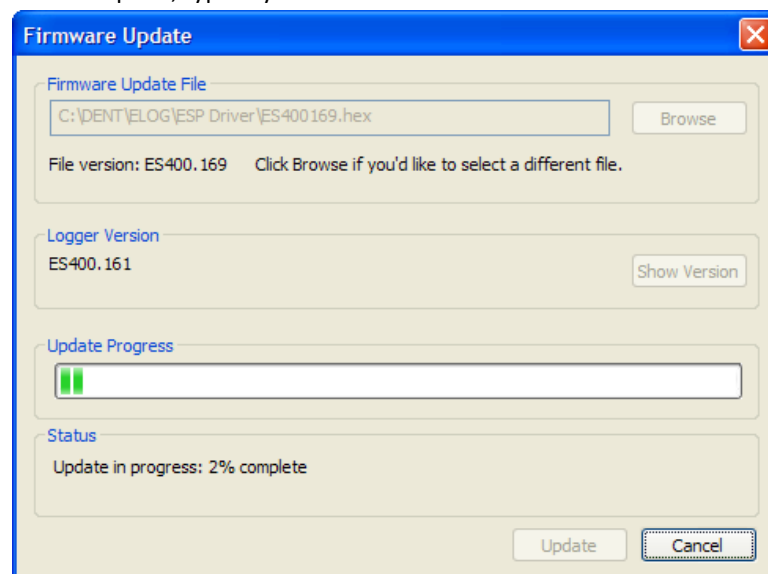
8. From ELOG 11, choose the **Tools > Update Update Firmware** option from the main menu:



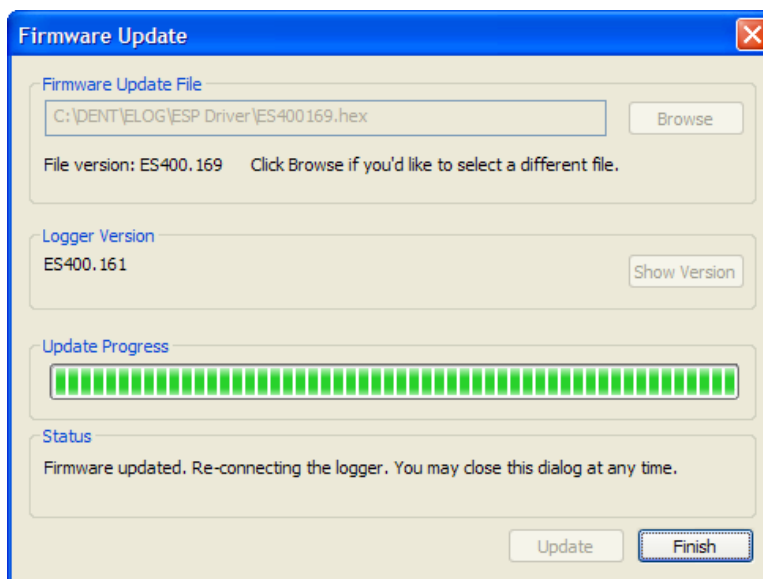
9. Make sure the ELITEpro SP is connected and ready to be updated (**IMPORTANT: All logged data will be lost. Please insure you have retrieved all logged data before updating the firmware.**)
10. From the Firmware Update dialog, browse to the location chosen earlier (steps 3 and 4 above) and click **Update**.



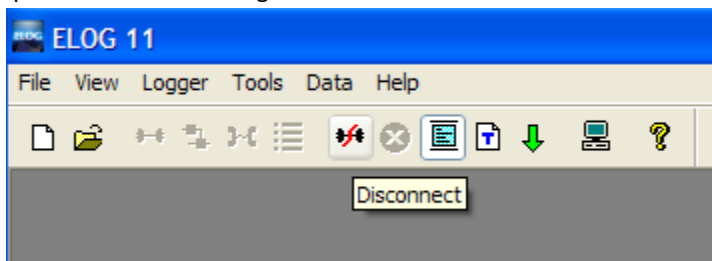
11. Wait for the update to complete, typically less than 5 minutes.



12. Click **Finish**.



13. Disconnect the ELITEpro SP from ELOG using the disconnect button .



14. Reconnect and configure the ELITEpro SP as needed.