

CT SPECIFICATIONS

SPLIT CORE CURRENT TRANSFORMERS

100/200/400/600A
3.20 CM (1.25") WINDOW



The low-cost solution for permanent or long-term studies. The split core design means no de-energizing or wire disconnection required.

Opening "Split-Core" Current Transformer (SCT) provides linear output voltage that is directly proportional to the input current. This current transformer is easily and safely installed over existing electrical power lines without disconnecting the lines or interrupting service.

DENT's energy monitoring components are used for a variety of applications including building automation, tenant submetering, performance verification, energy management and new technology assessment.



DENT P/N	NOMINAL RATING (Amps)	USEFUL CURRENT RANGE (Amps)	DIMENSIONS				
			A	B	C	D	E
CT-SCM-0100	100	10 - 130*					
CT-SCM-0200	200	20 - 260*	8.26 cm (3.25")	8.51 cm (3.35")	2.54 cm (1.00")	3.18 cm (1.25")	3.18 cm (1.25")
CT-SCM-0400	400	40 - 520*					
CT-SCM-0600	600	60 - 780*					

*Max Rating

ELECTRICAL SPECIFICATIONS

Output Signal
333mV @ rated current

Accuracy
+/- 1% at 10% to 130% of rated current

Phase Shift
<2° at rated current

Frequency Range
50 Hz to 400 Hz

MECHANICAL SPECIFICATIONS

Dimensions
8.26 x 8.5 x 2.54 cm
(3.3 x 3.4 x 1.0")

Polarity
White lead is positive

Output Lead
Leads 2.7 m (8 ft) twisted pair
20 AWG

Operating Temperature
Maximum 105°C (220°F)

OTHER FEATURES

Window Size
3.20 cm (1.25")

Weight
340 g (12 oz)

Dielectric Strength
5000V around the case
600V rated leads

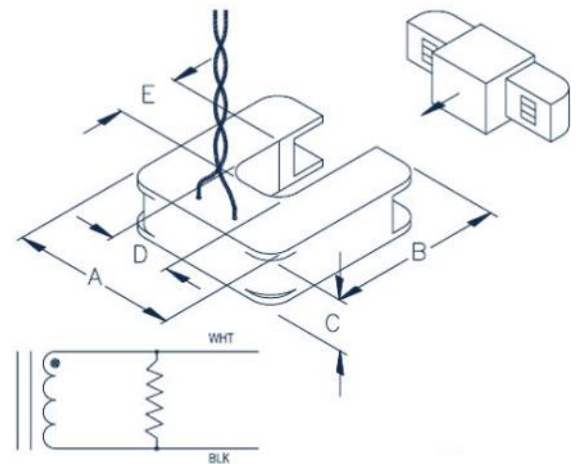
Storage Temperature
Maximum 105°C (220°F)

Case Protection
Epoxy encapsulated housing

SAFETY SPECIFICATIONS

CE & ETL Listed
Conforms to IEEE C57.13-1993
Conforms to EN 60044-1 :1999
Certified to CAN/CSA C22.2 No. 61010-1 and UL 61010-1 2nd Ed.

Working Voltage
Maximum 600 Vrms, CAT III



ORDERING PART NUMBER

AVAILABLE UNTERMINATED (U) OR WITH BANANA PLUGS (B)
CT-SCM-0100-U or -B
CT-SCM-0200-U or -B
CT-SCM-0400-U or -B
CT-SCM-0600-U or -B