

# STEP-BY-STEP GUIDE TO CONNECTING 1000A CLAMP ON CT TO A LOAD

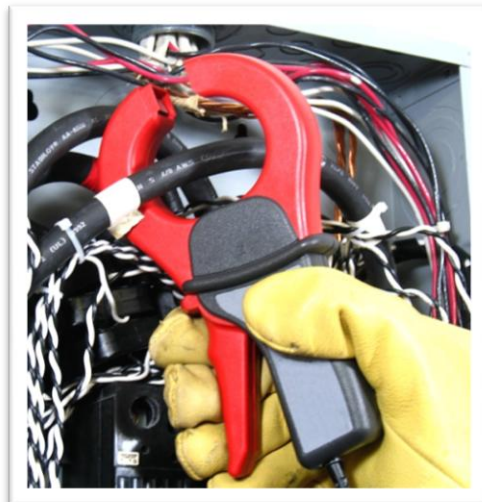


**ALL WORK SHOULD BE PERFORMED  
BY A QUALIFIED ELECTRICIAN  
USING PROPER SAFETY EQUIPMENT**

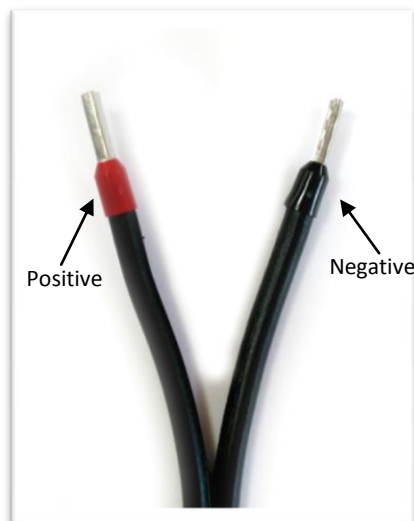
**Photo 1:**  
*Open CT.*



**Photo 2:** *Install CT  
Around Conductor.*



**Photo 3:** *Connect Red  
Wire to Positive  
Terminal. Connect Black  
Wire to Negative  
Terminal.*



Equipment is protected throughout by double insulation.

1. Open the CT by holding squeezing the lever on the side.
2. Connect CT around the load conductor to be measured. Make sure the maximum current of the conductor does not exceed CT's rating and that the CT is oriented in the proper direction according to the label on the CT.
3. Allow the CT to close. The conductor should be in the inside of the CT window (*See Photo 2.*)
4. Repeat Steps 1-3 if you are using more than one CT.
5. Connect the **red wire** on the CT to the **positive terminal** on the measuring device. (*See Photo 3.*)
6. Connect the **black wire** on the CT to the **negative terminal** on the measuring device. (*See Photo 3.*)
7. You are now ready to begin your monitoring session.